

Mount instruction

Modular ramp



1-2. only if ramp includes platform

1. Mount bridge transition (RA) on the platform (if included) otherwise mount one or two ramp attachments (KRL). (Step 5)



2. Mount support legs. Use the two outer holes Go on to step 4.



3. Mount the upper part (ÖL) in the slot on the upper half of the ramp. No screws needed! Put the ramp on existing platform



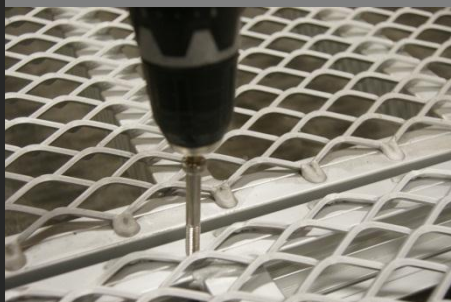
4. Mount support legs on both sides of the ramp. Plumb the legs and tighten the screws. Always tighten the left screw first



5. Mount the ramp attachment (KRL) in the slot at the lower part of the ramp (same when it comes to platforms) No screws needed!



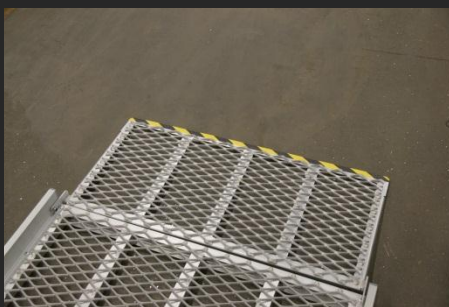
6. Lay down the next ramp section. Repeat 4-5 until desired length



7. Use the pervading screw with associated nut and washer on the bottom between the ramp sections.



8. If desired adjust the splice up to +50mm



9. The bottom transition plate is fixated with 2 screws attached from the outside, no nuts needed!



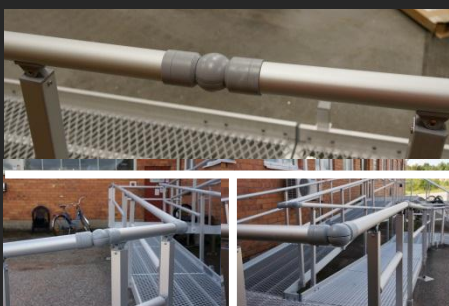
10. Mount the screws for the railholders. Use the 4 inner holes. Put the railholders on the screws and put in the railpoles.



11. Loosen the preattached screws in the poles and upper rail



12. Mount the bottom and upper part of the handrail and tighten the screws.



13. Mount the rail link



14. Plumb the rail. Tighten the screws for the railholder, always tighten the left screw first.



15. Mount the two included screws to fixate the rail link.



16. Finish by putting the plastic details on the end part of the rail