

REF

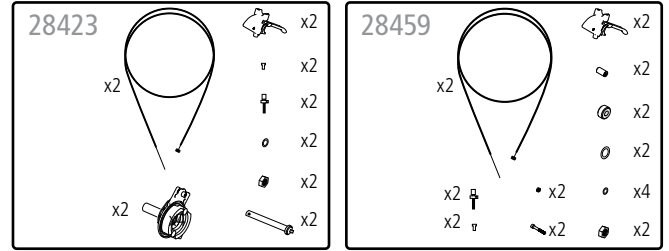
28423
28459

etac[®]

Monteringsatts Vårdarbroms Prio 20", 22", 24"/16"

Assembly kit Drum Brake System Prio 20", 22", 24"/16"

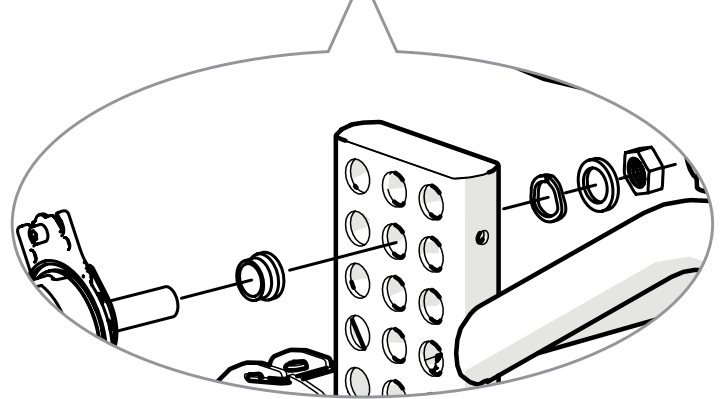
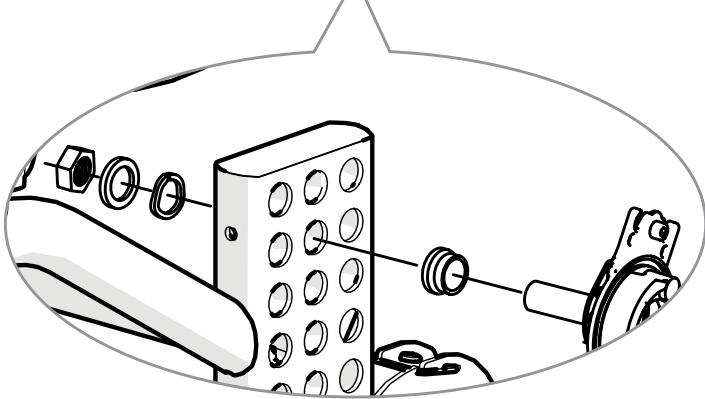
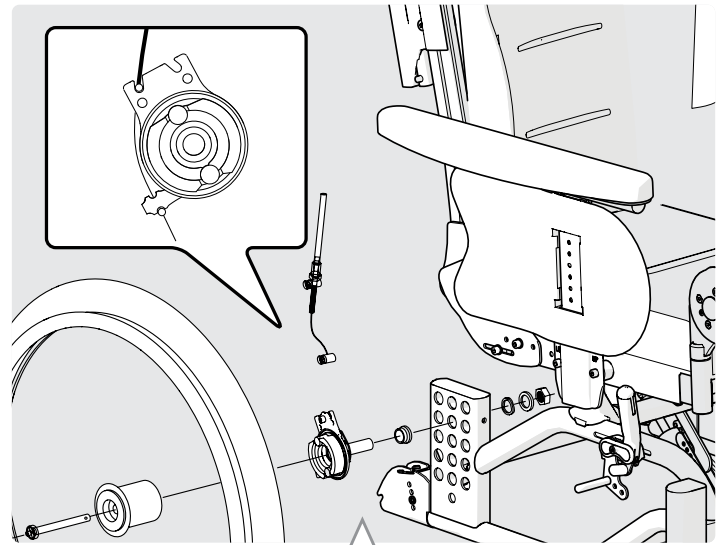
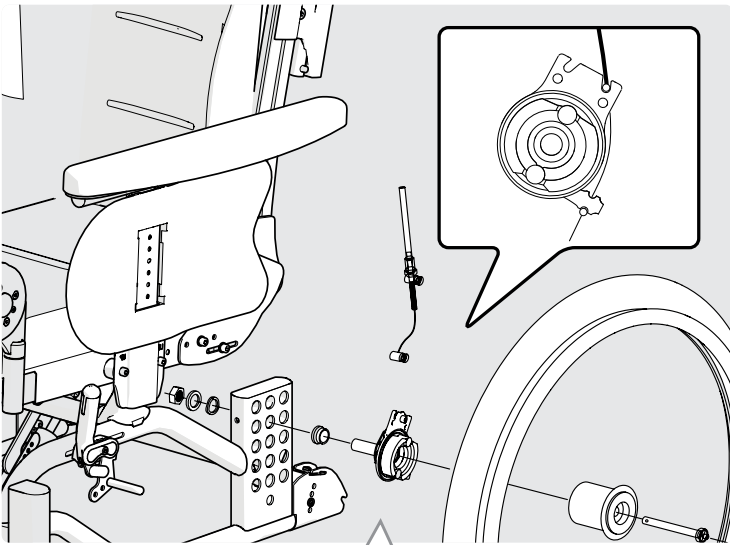
Montagesatz Trommelbremsystem Prio 20", 22", 24"/16"



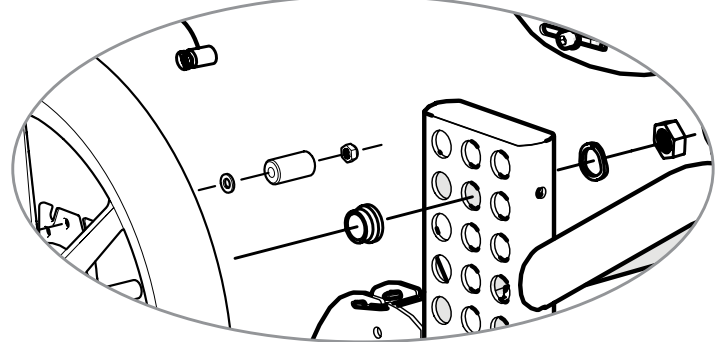
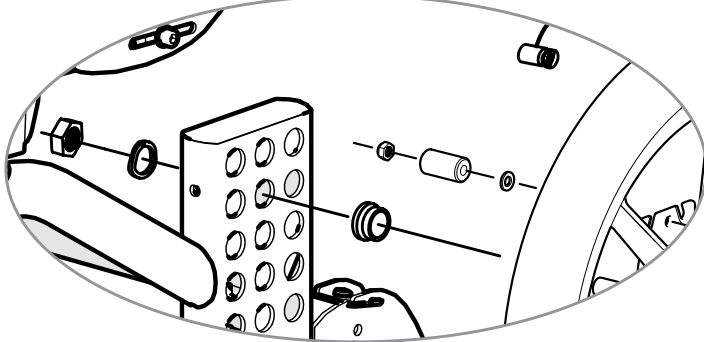
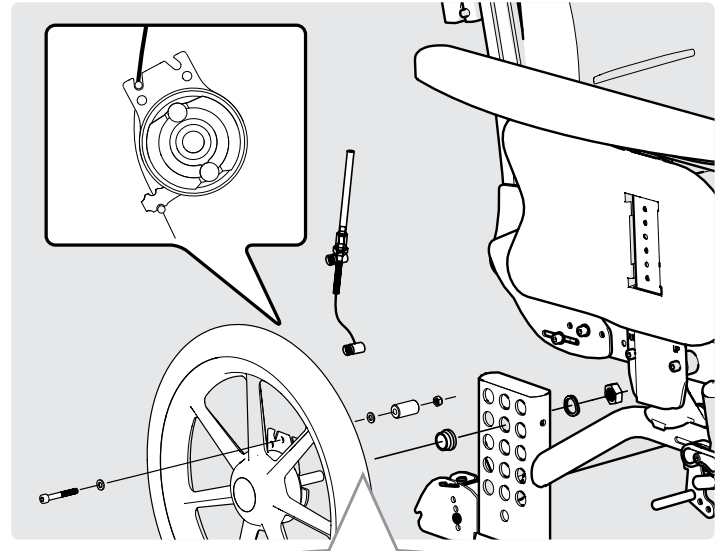
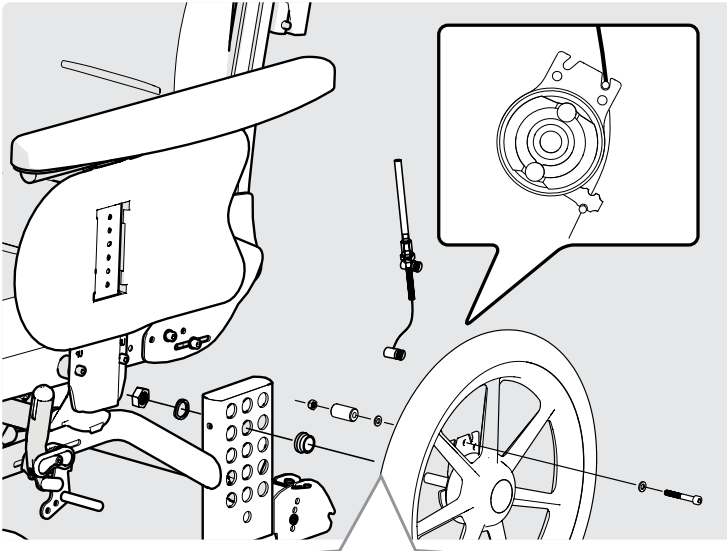
75067.3 2022-08-15

1

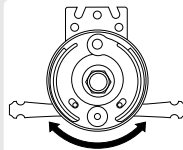
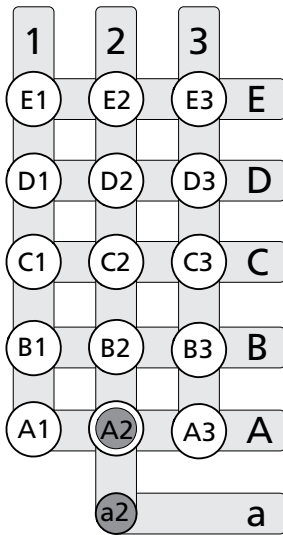
20", 22", 24"



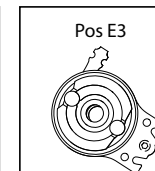
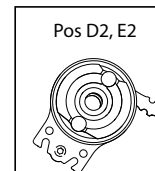
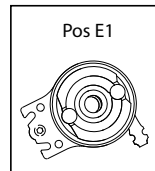
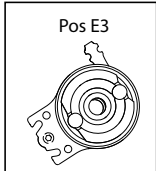
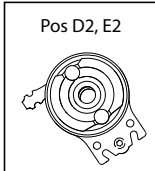
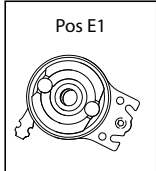
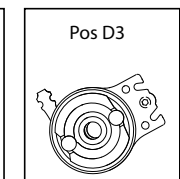
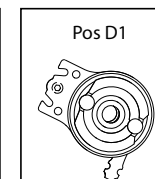
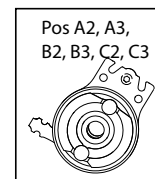
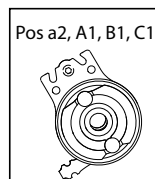
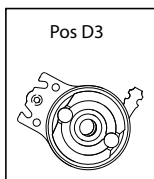
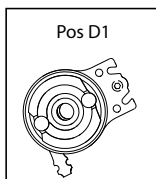
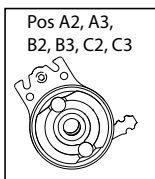
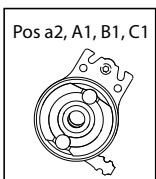
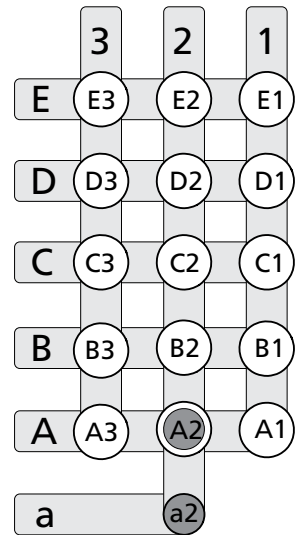
16"



Drivhjulspositioner/Rear wheel positions/Antriebsradpositionen



Bromsarmen är vändbar
The brake arm is reversible
Der Bremsarm ist umlegbar

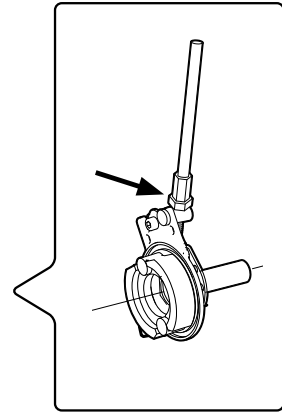
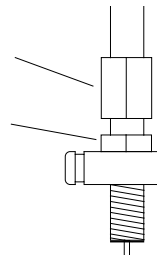


Vid justering av broms lossa muttern (A) och justera bromsen genom att skruva (B) upp/ner.
När bromsen tar lagom hårt drag åt muttern (A).

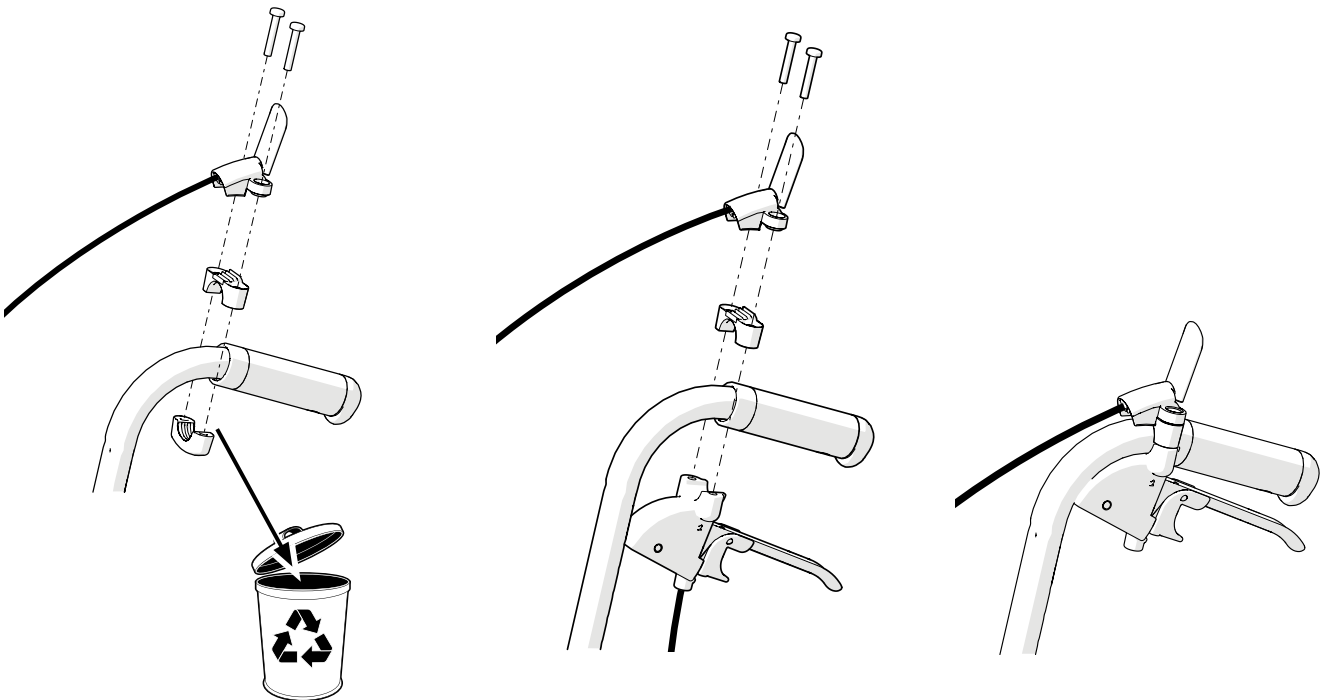
To adjust the brakes, loosen nut (A). Loosen/tighten screw (B) in order to reach proper brake function. Tighten the nut (A).

Zum Einstellen der Bremsen die Mutter (A) lösen. Für die ordnungsgemäße Bremsfunktion Schraube (B) lösen/anziehen. Mutter (A) anziehen.

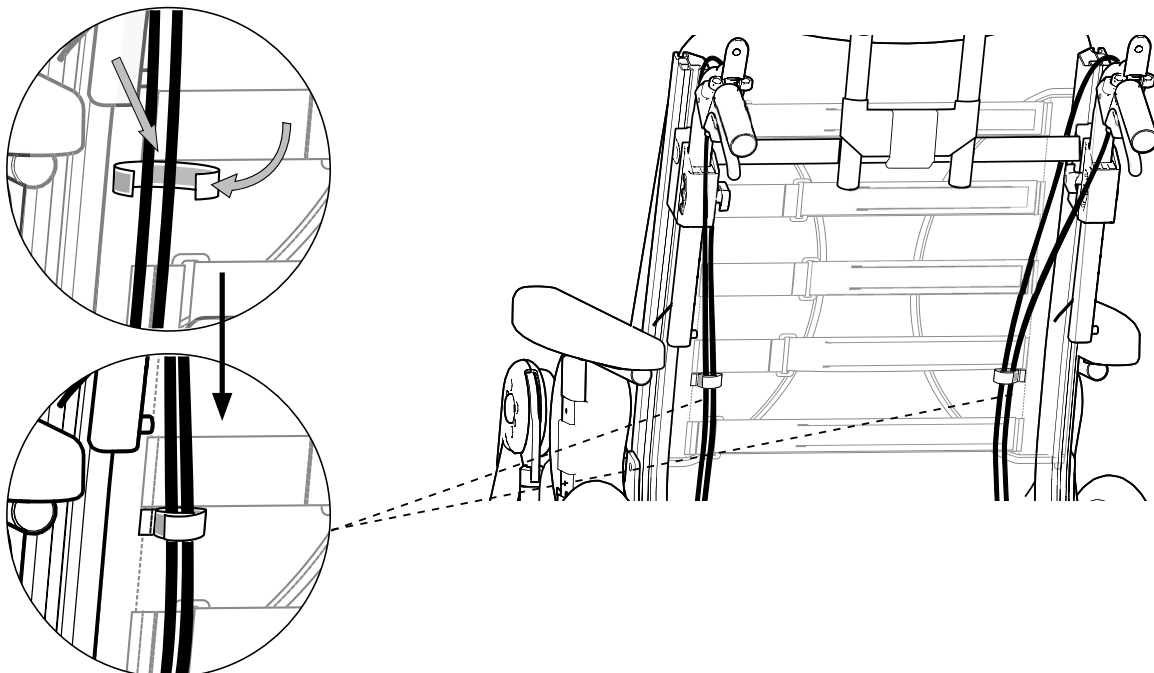
B
A



2

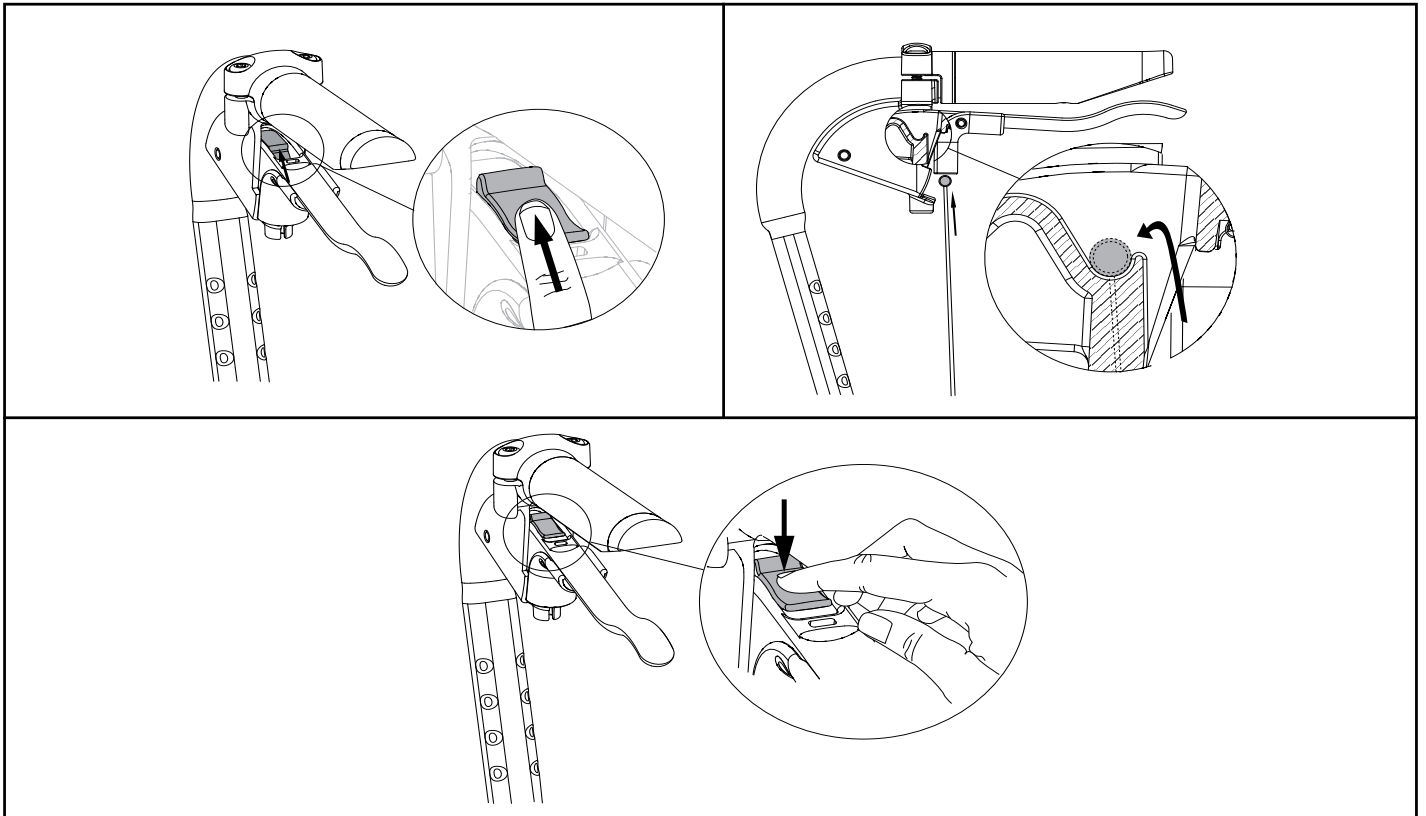


3

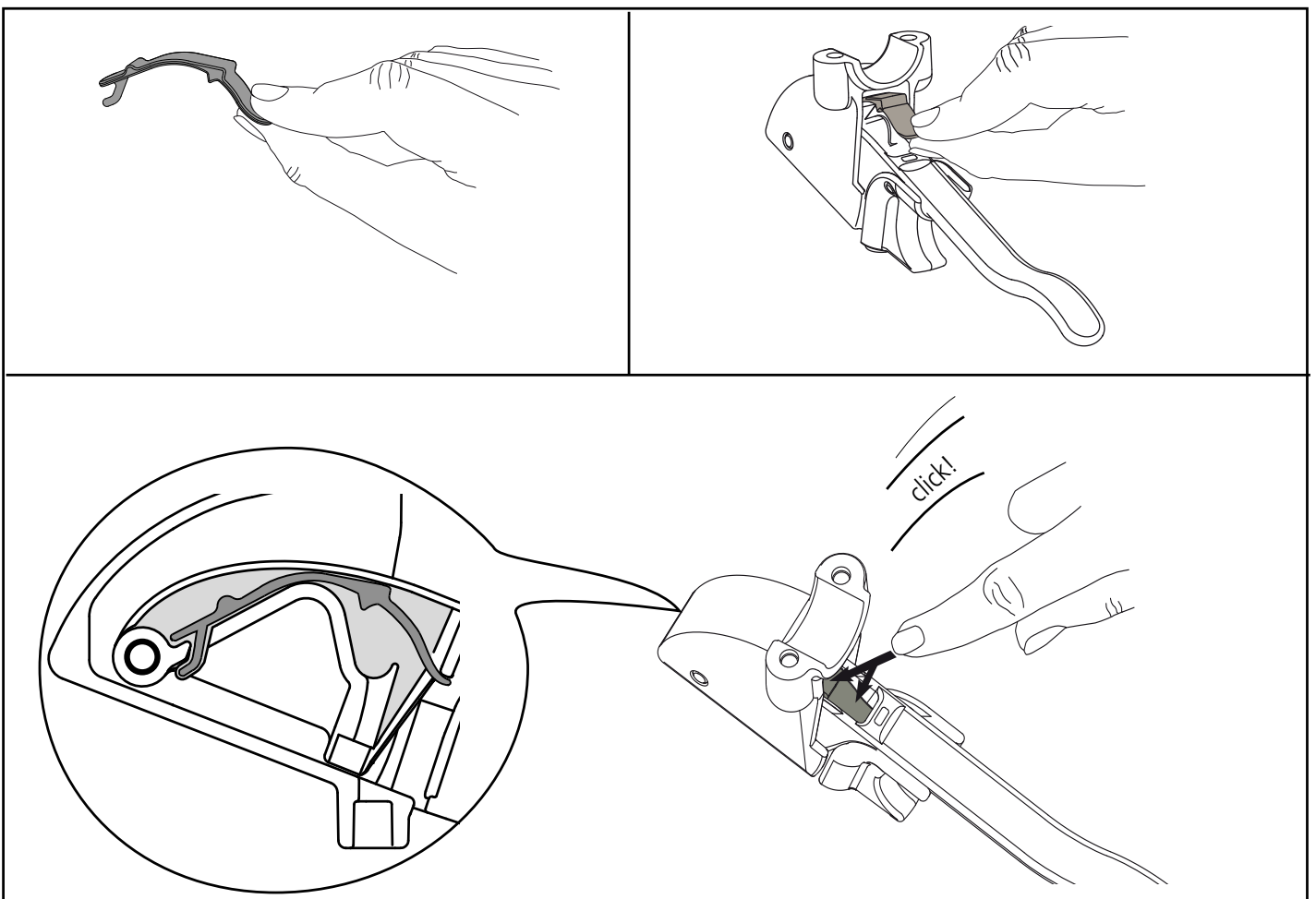


4

Infästning av bromsvajer/Attach of the brake wire/Feststellen der Bremsgriffe



Om vajerlåset faller bort/If the wire lock is lost/Wenn der Draht Schloß verloren ist



7 320451 414656

75067